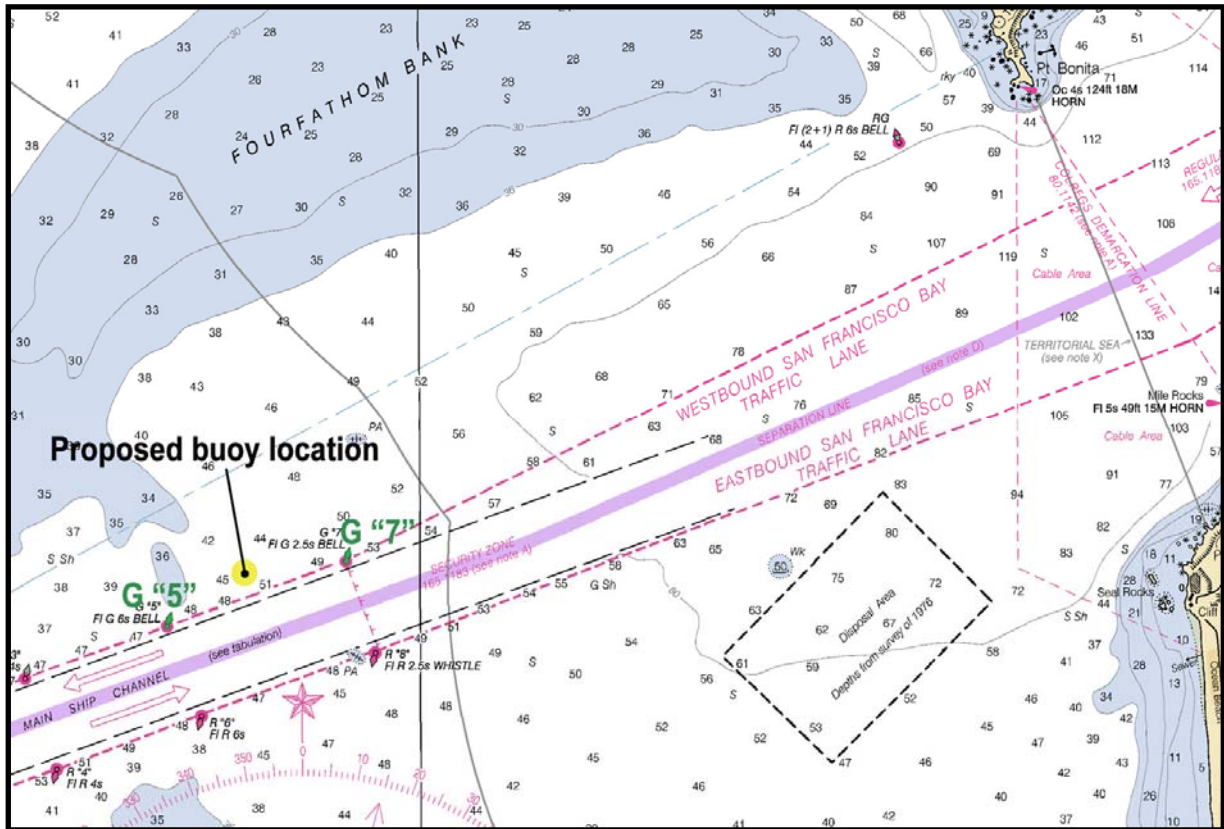


WAVE BUOY – San Francisco Bar – Station 142



Proposed Location: Lat. $37^{\circ} 46.88'$
Long. $122^{\circ} 35.93'$
Depth: 7.5 Fathoms

Buoys measure wave height, wave direction, wave period and sea surface temperature. The data are broadcast on the NWS Marine Weather Channel, and are also disseminated in near real-time on the web at <http://cdip.ucsd.edu> (click on RECENT).

At night, the buoy will emit a yellow color flashing light.

Scripps Institution of
Oceanography, La Jolla, CA
858-534-3032

Email: www@splash.ucsd.edu