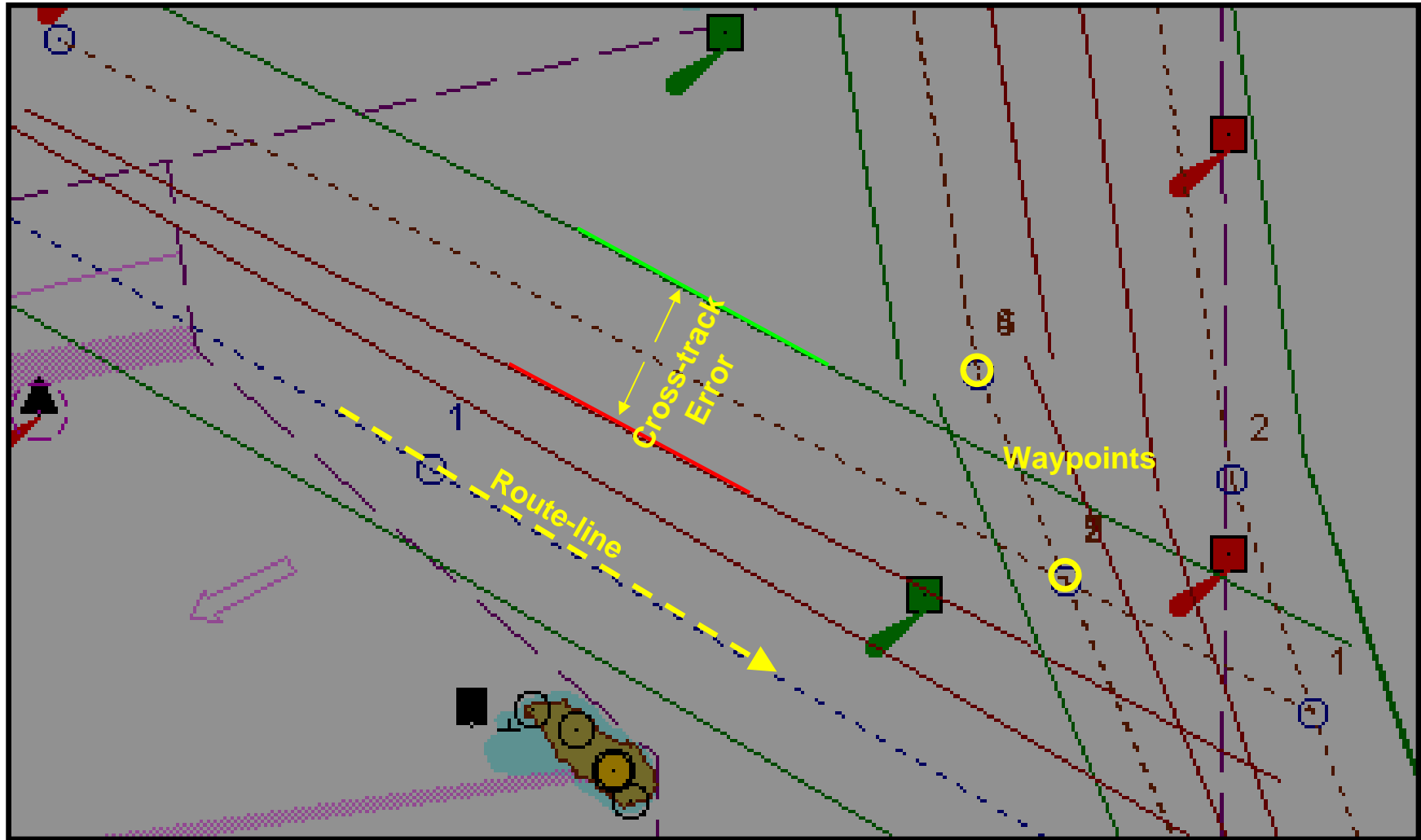


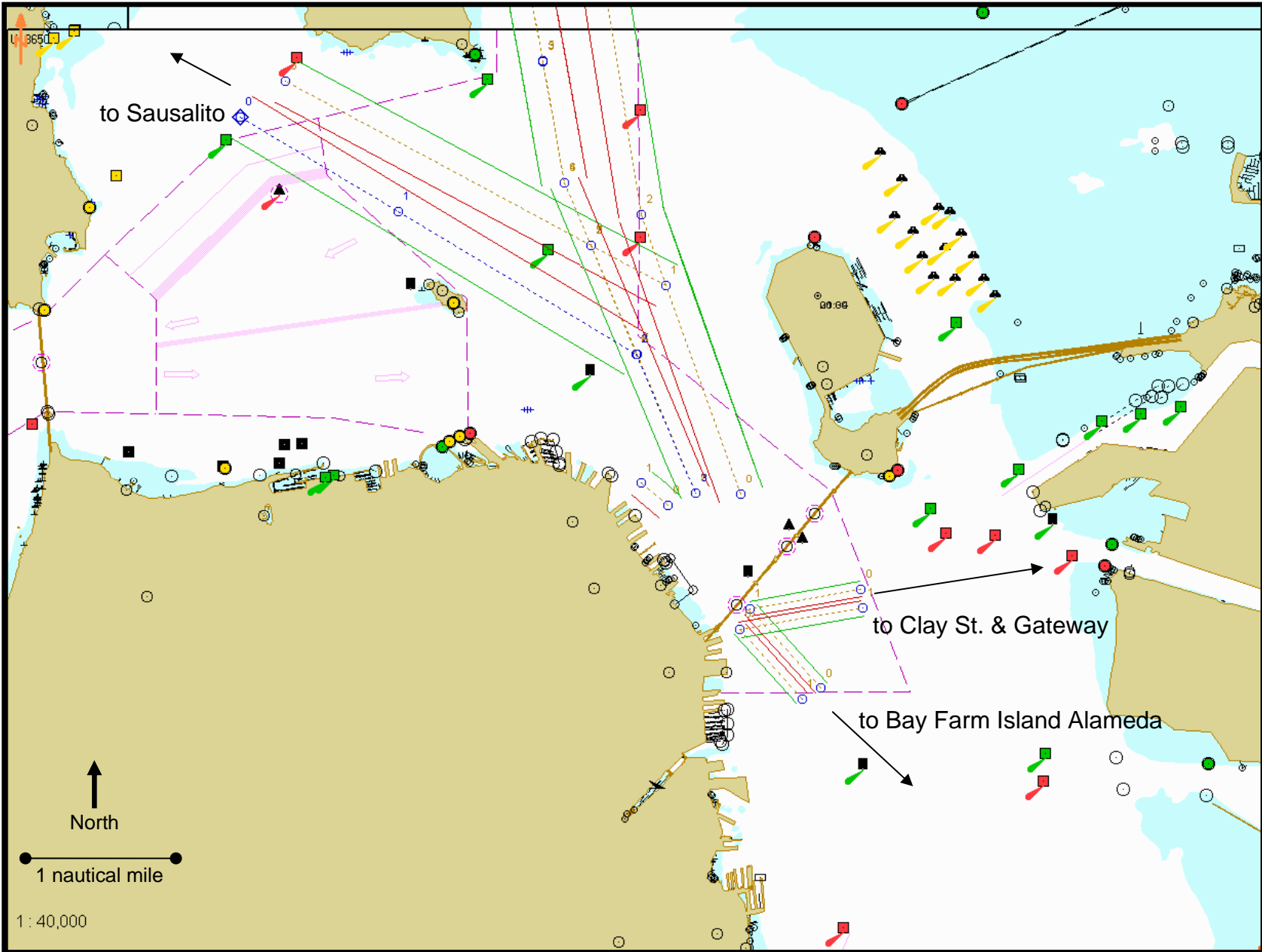
# Diagram Key



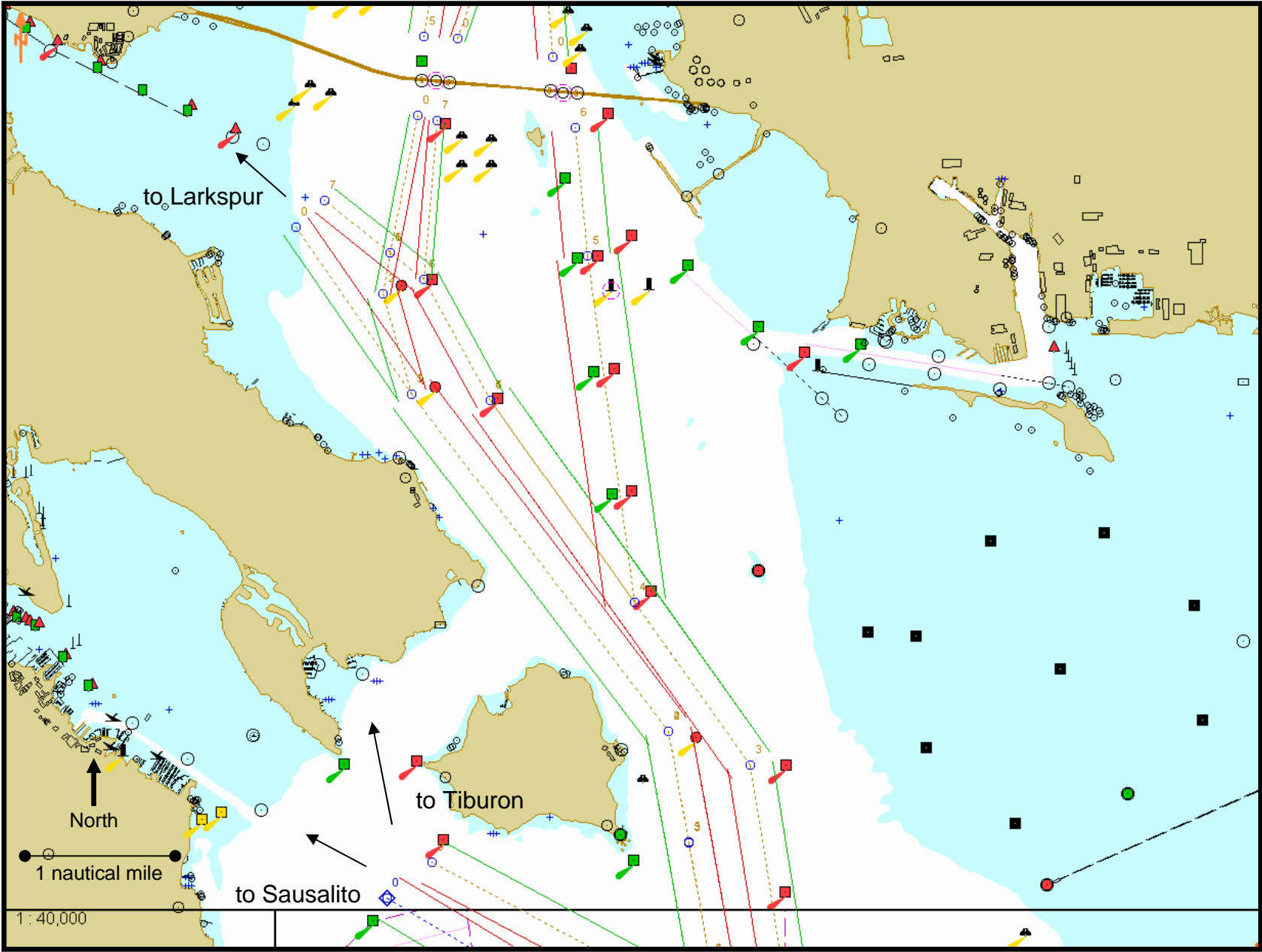
The following chart features are highlighted above.

- Route-line: Centerline of the ferry route.
- Cross-track Error: Left and right of route-line tolerance.
- Waypoints: Turns, route crossing points, and communications points.

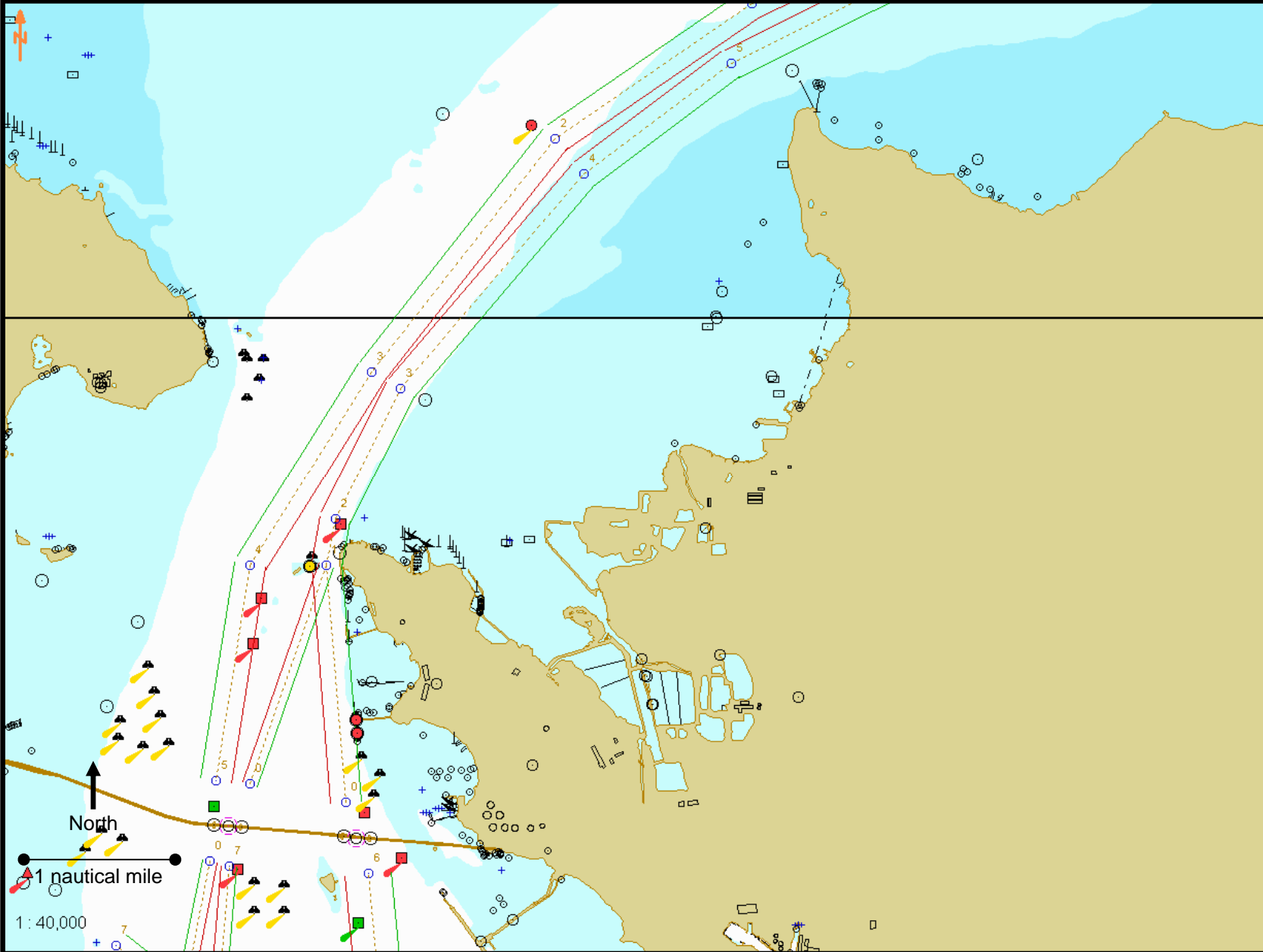
# Central Bay and South San Francisco Bay



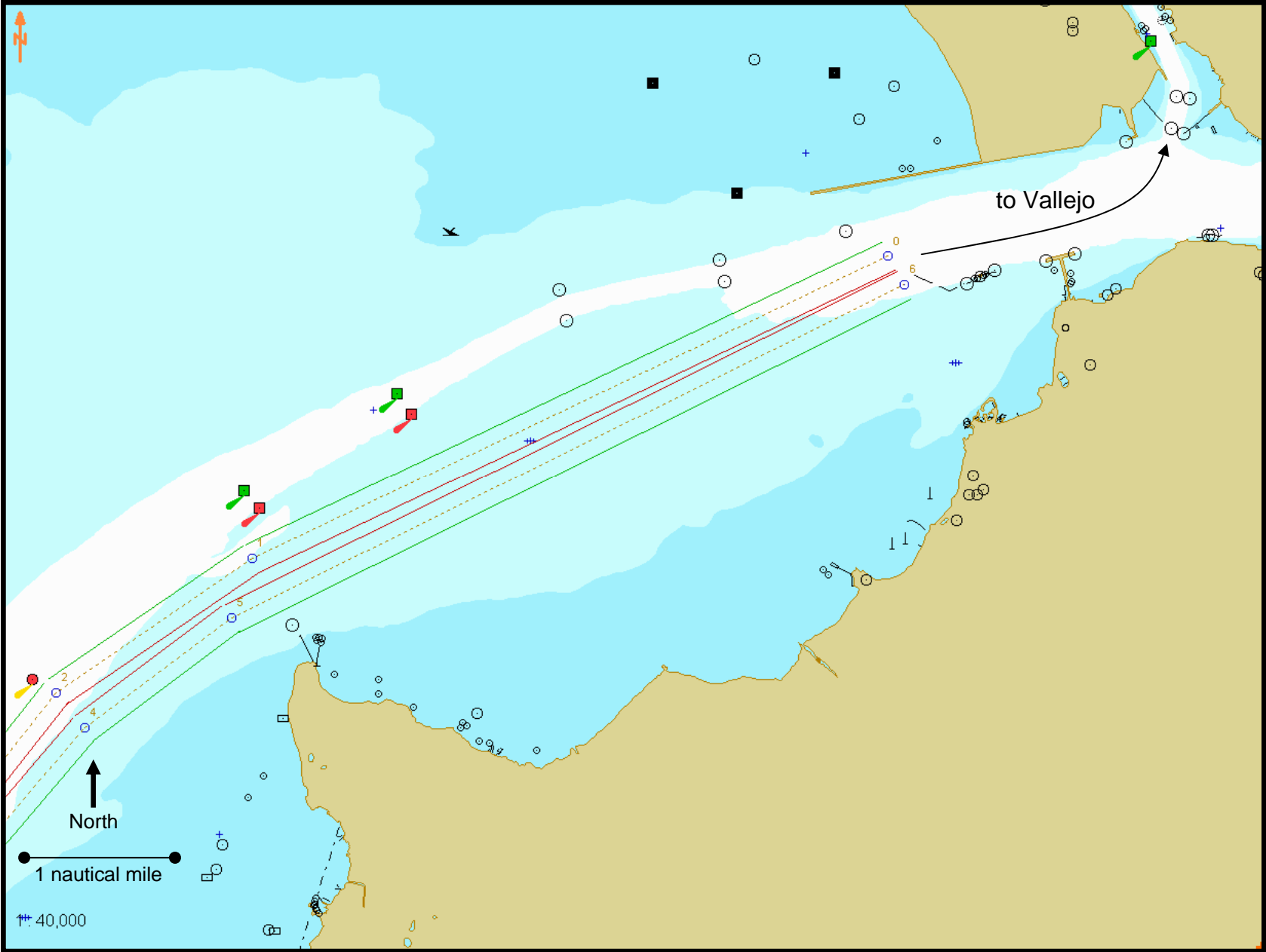
# North Channel and Southampton Shoal Channel



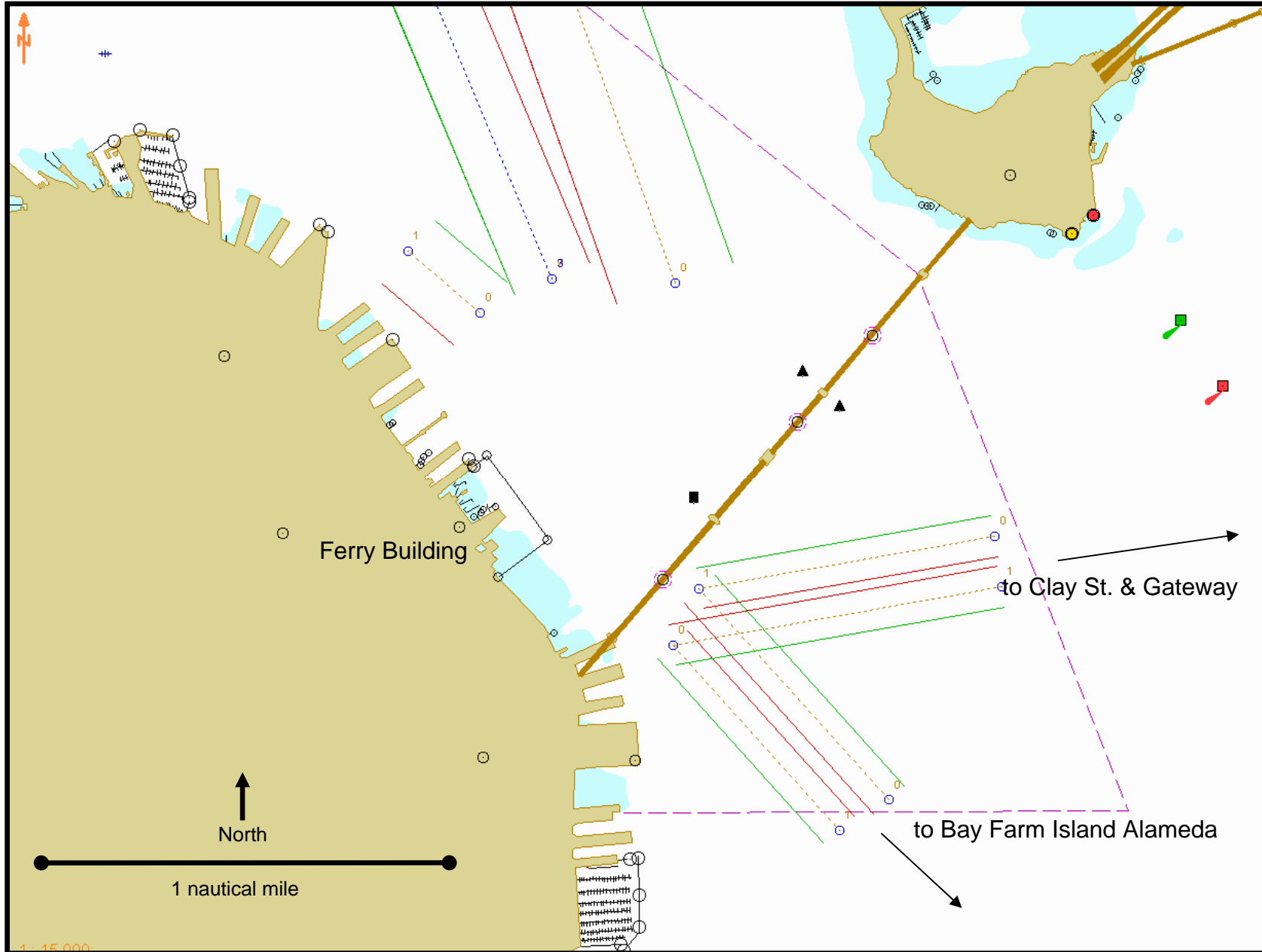
# San Pablo Strait Channel



# San Pablo Bay and Mare Island Strait



# Ferry Building Approach/Departure Zone





# Source and Contact Information

Diagrams are screen print files from vector-based electronic nautical charts (ENCs).

Additional lines and labels were added to the screen print files for emphasis and clarity.

For more information contact:

**Scott Humphrey**

Training Director

Sector San Francisco Vessel Traffic Service

Phone: +1 415 399 7444

Email: [scott.humphrey@uscg.mil](mailto:scott.humphrey@uscg.mil)