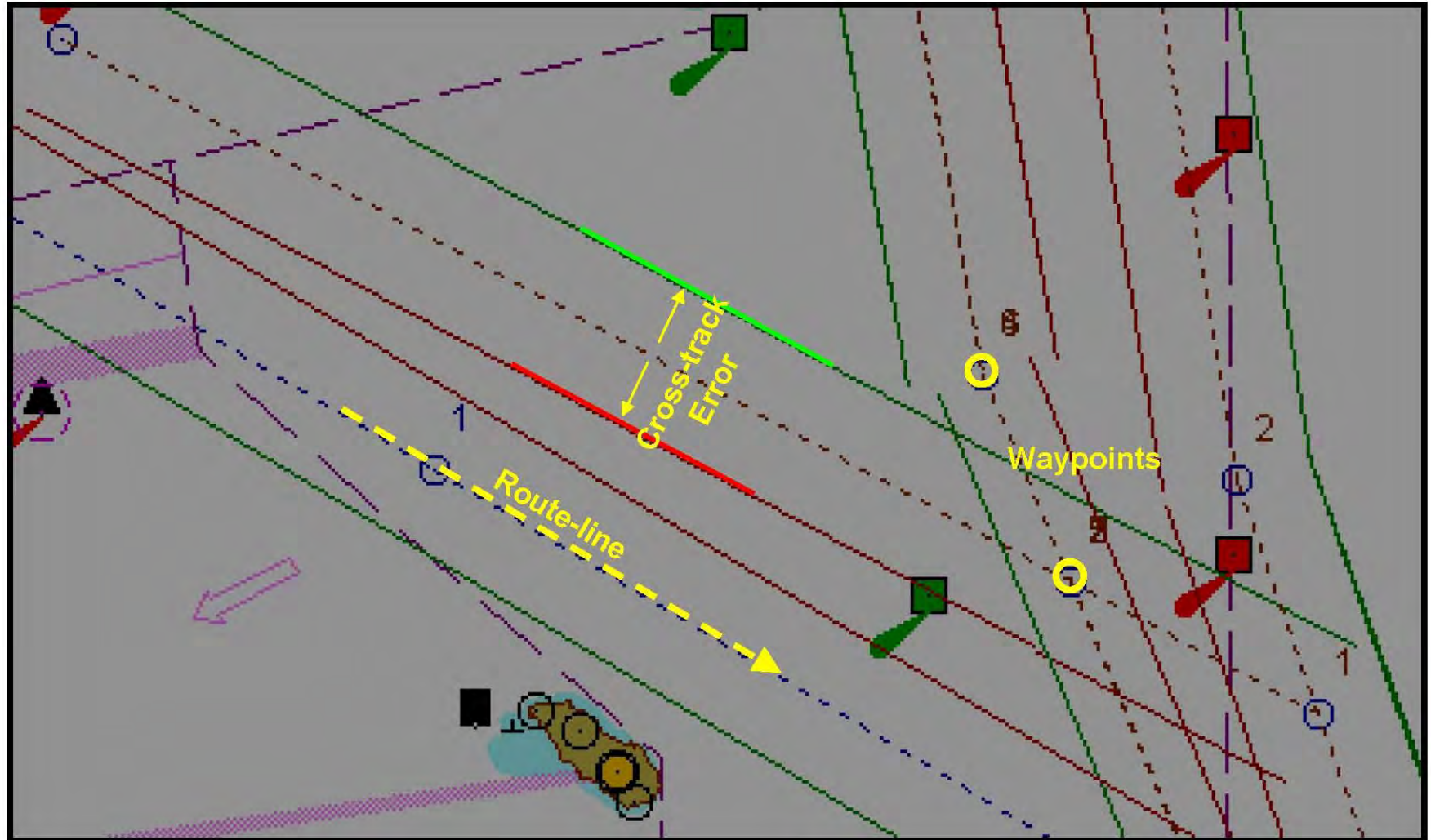


## **Passenger Ferry Traffic Routing Protocol**

To avoid future possible ferry collisions, particularly in light of expanded fast ferry service, a protocol for ferry navigation in the San Francisco and San Pablo Bays includes routes and a Ferry Building Approach Zone, as shown in Figures 1-7 below.

Adopted May 2008. See Harbor Safety Plan Chapter XI: Small Passenger Vessels - Ferries for discussion.

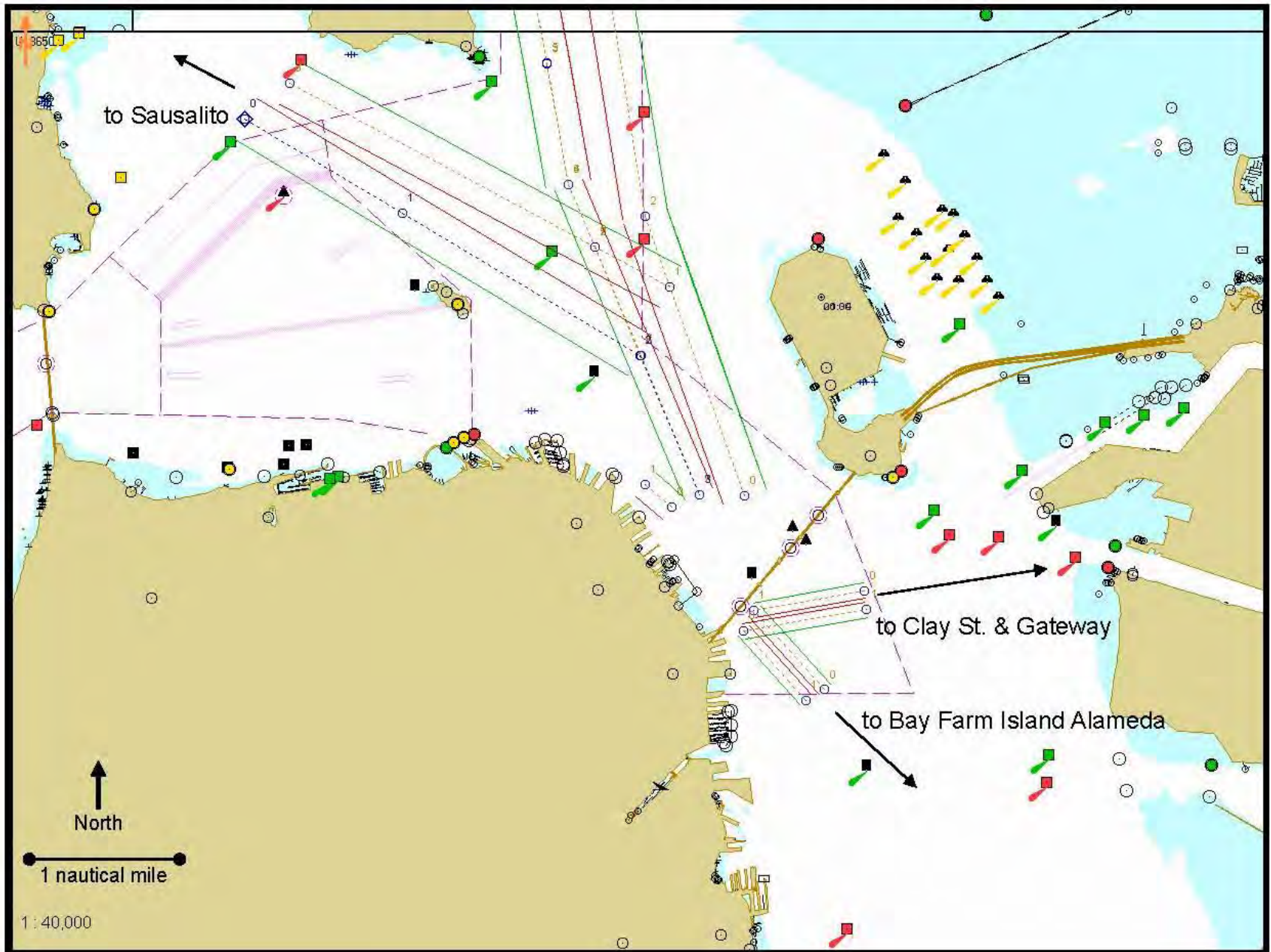
# Diagram Key



The following chart features are highlighted above.

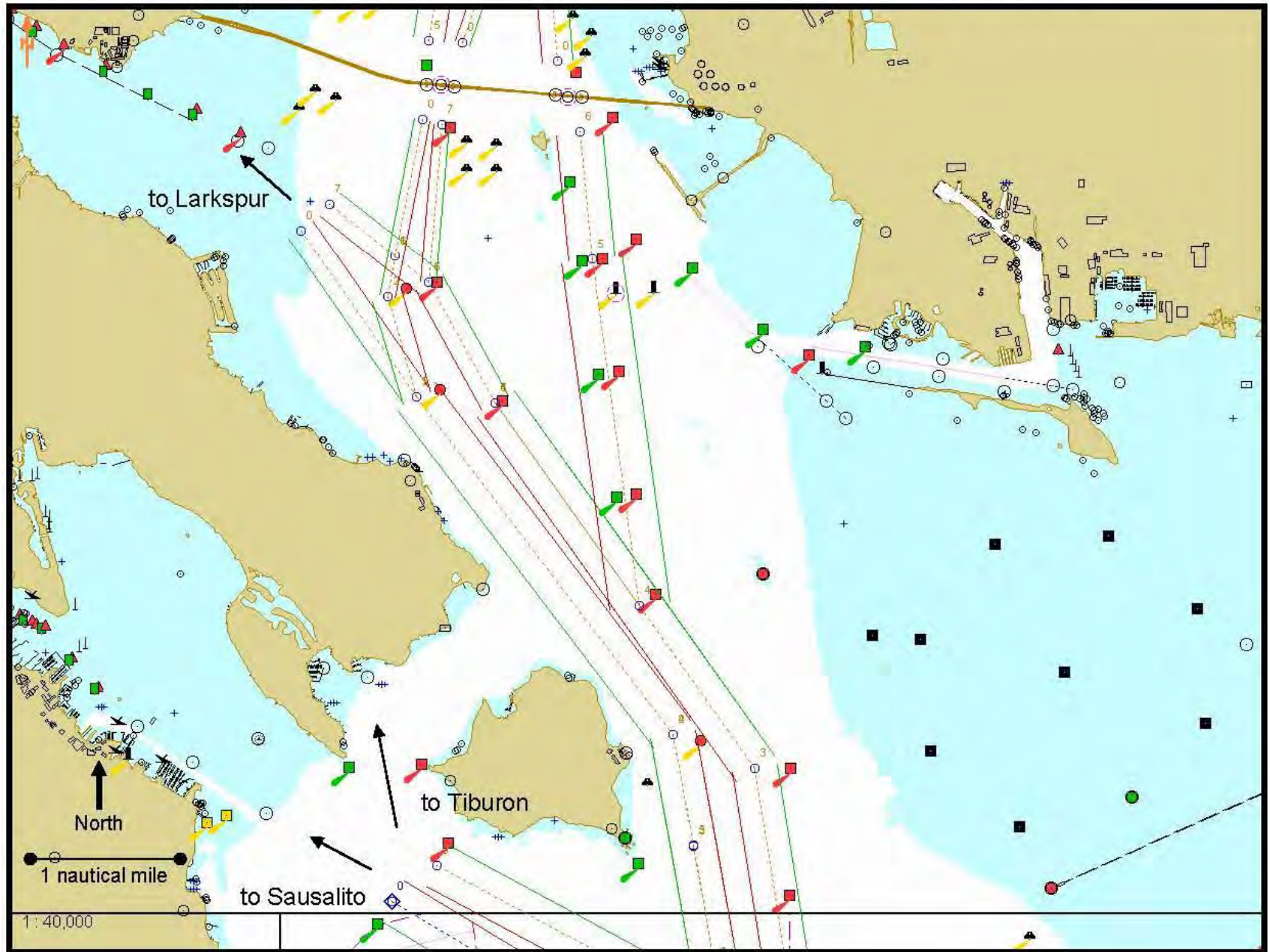
- Route-line: Centerline of the ferry route.
- Cross-track Error: Left and right of route-line tolerance.
- Waypoints: Turns, route crossing points, and communications points.

# Central Bay and South San Francisco Bay

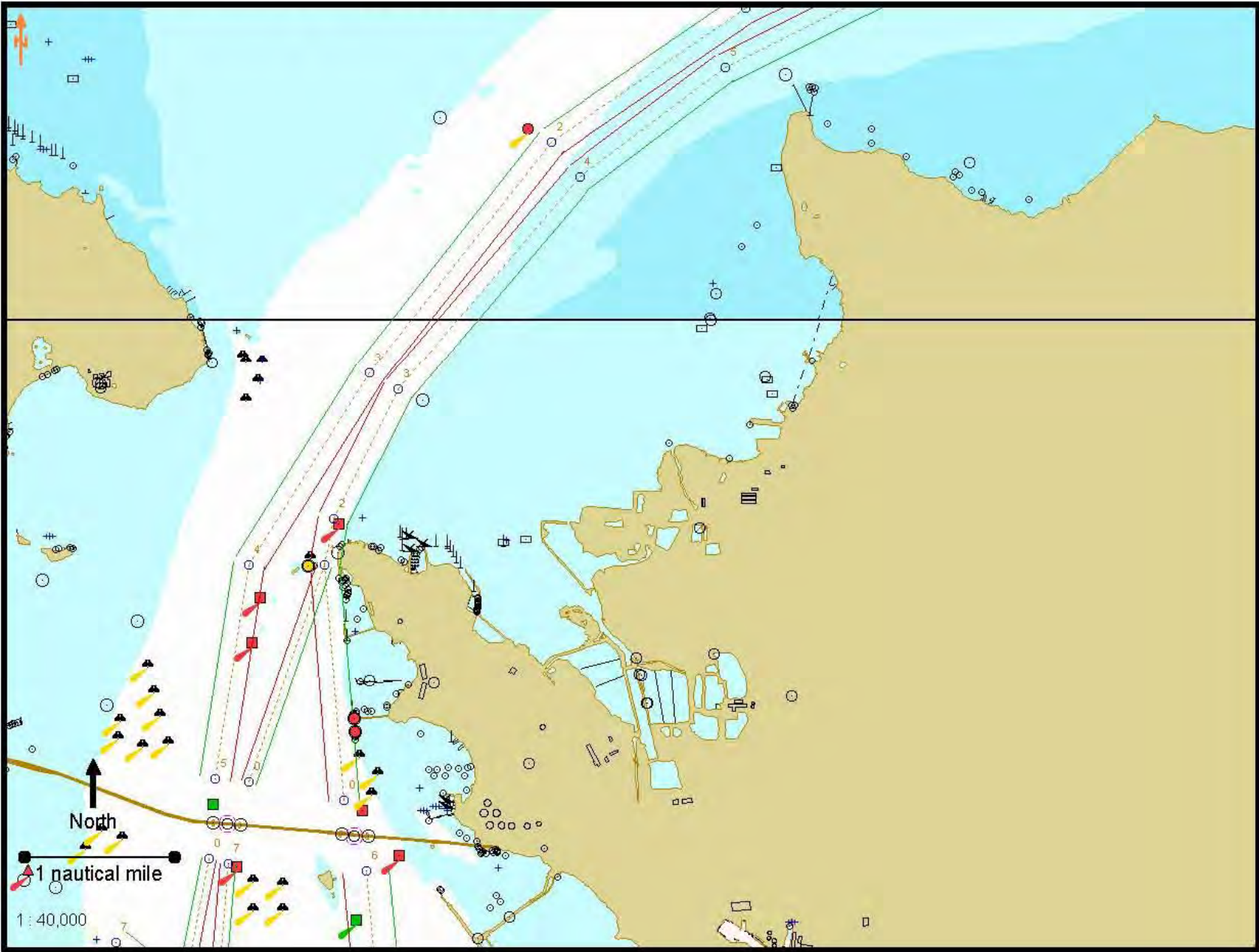




# North Channel and Southampton Shoal Channel

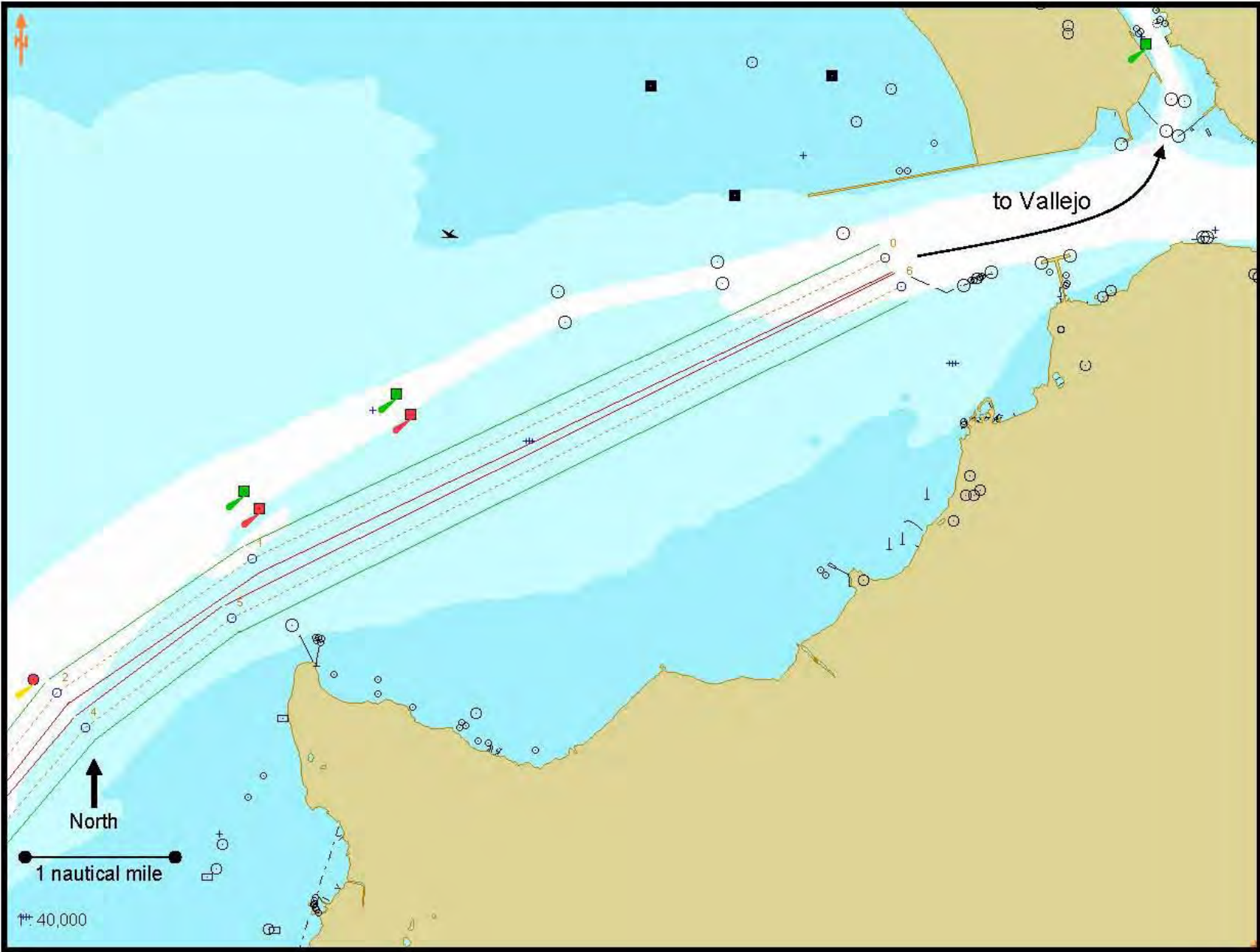


# San Pablo Strait Channel

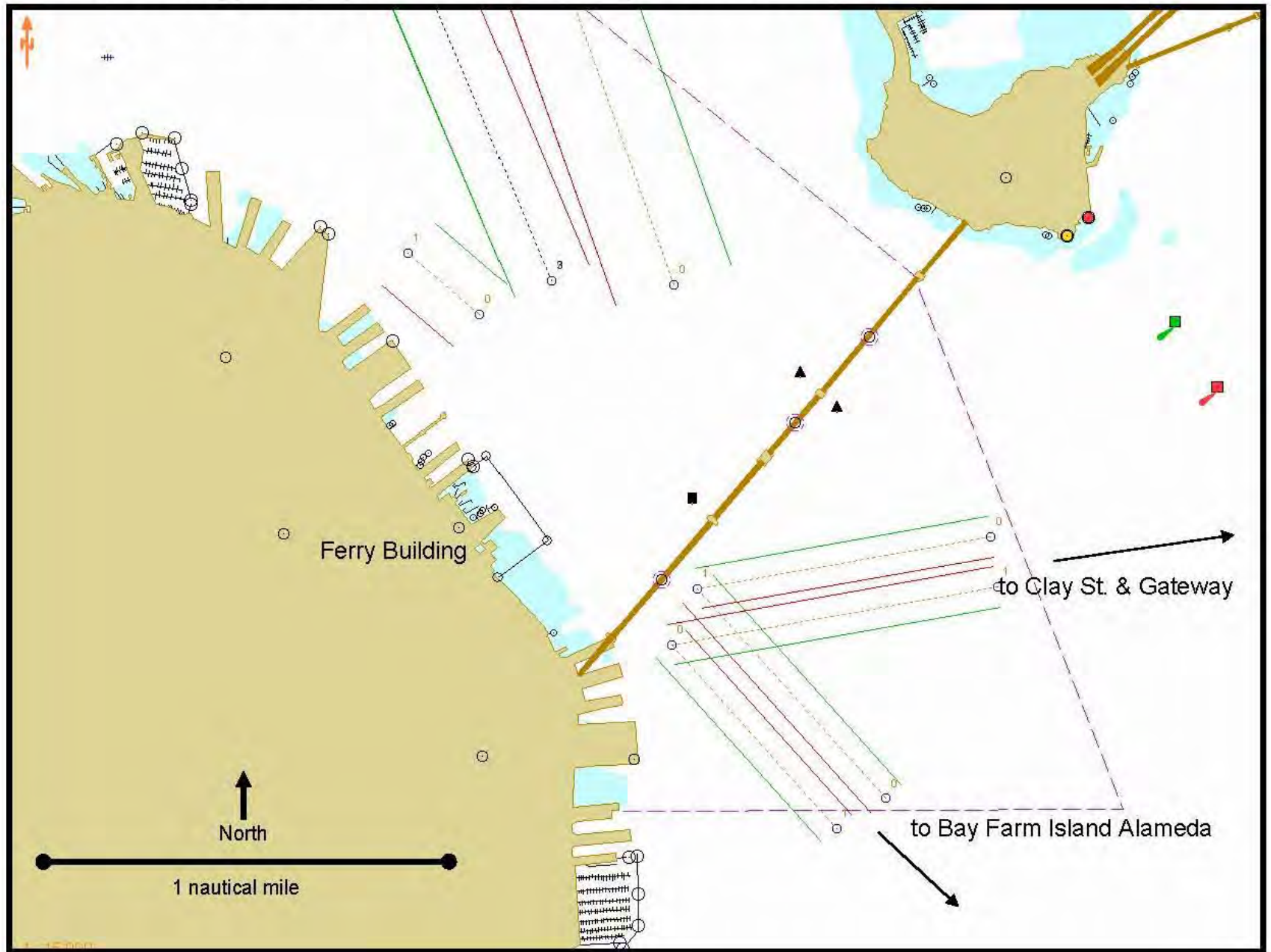




# San Pablo Bay and Mare Island Strait

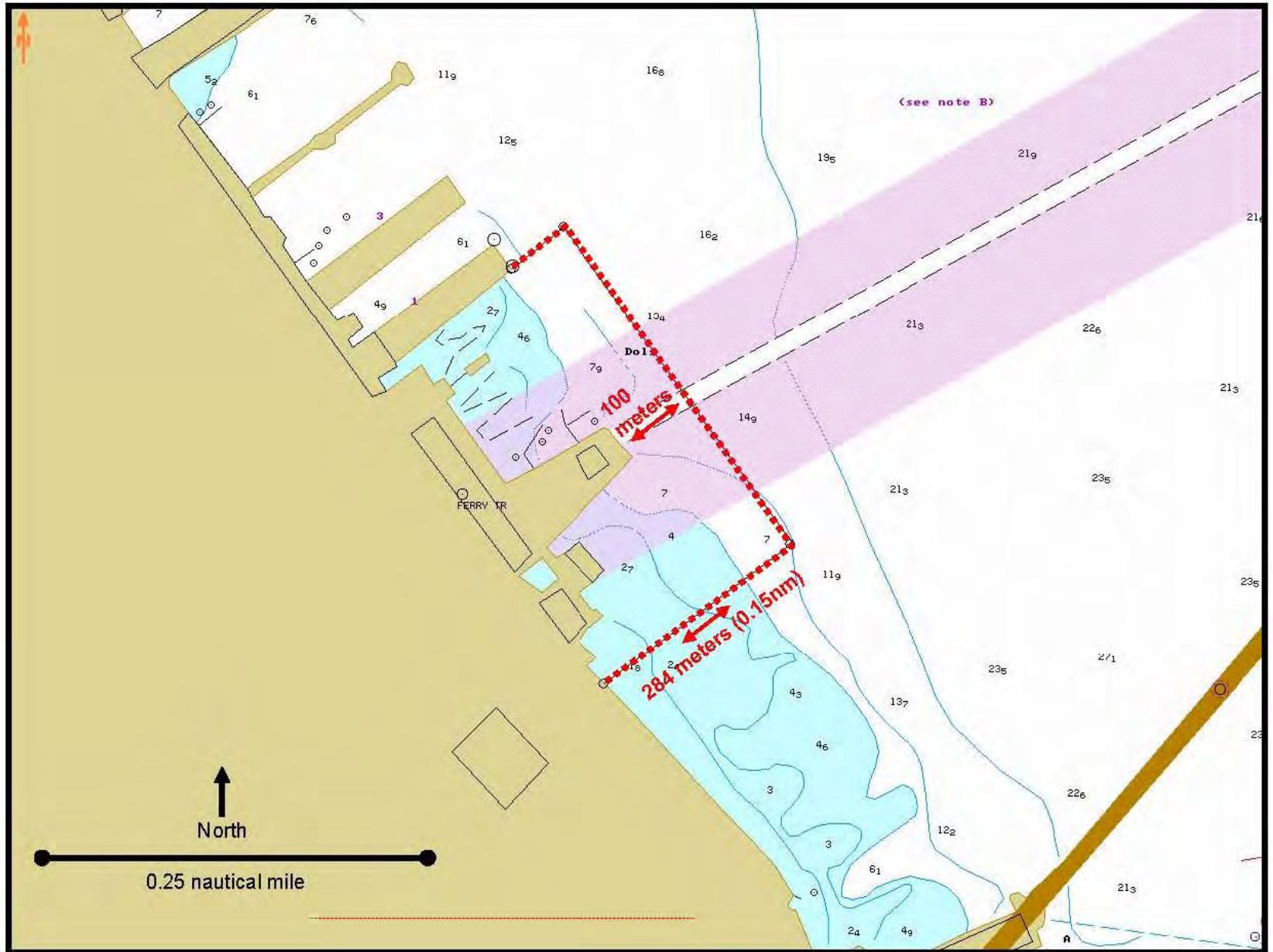


# Ferry Building Approach/Departure Zone





# Ferry Building Maneuvering Area





# Source and Contact Information

Diagrams are screen print files from vector-based electronic nautical charts (ENCs).

Additional lines and labels were added to the screen print files for emphasis and clarity.

For more information contact:

**Scott Humphrey**

Training Director

Sector San Francisco Vessel Traffic Service

Phone: +1 415 399 7444

Email: [scott.humphrey@uscg.mil](mailto:scott.humphrey@uscg.mil)