

NOAA report to the San Francisco Bay Harbor Safety Committee

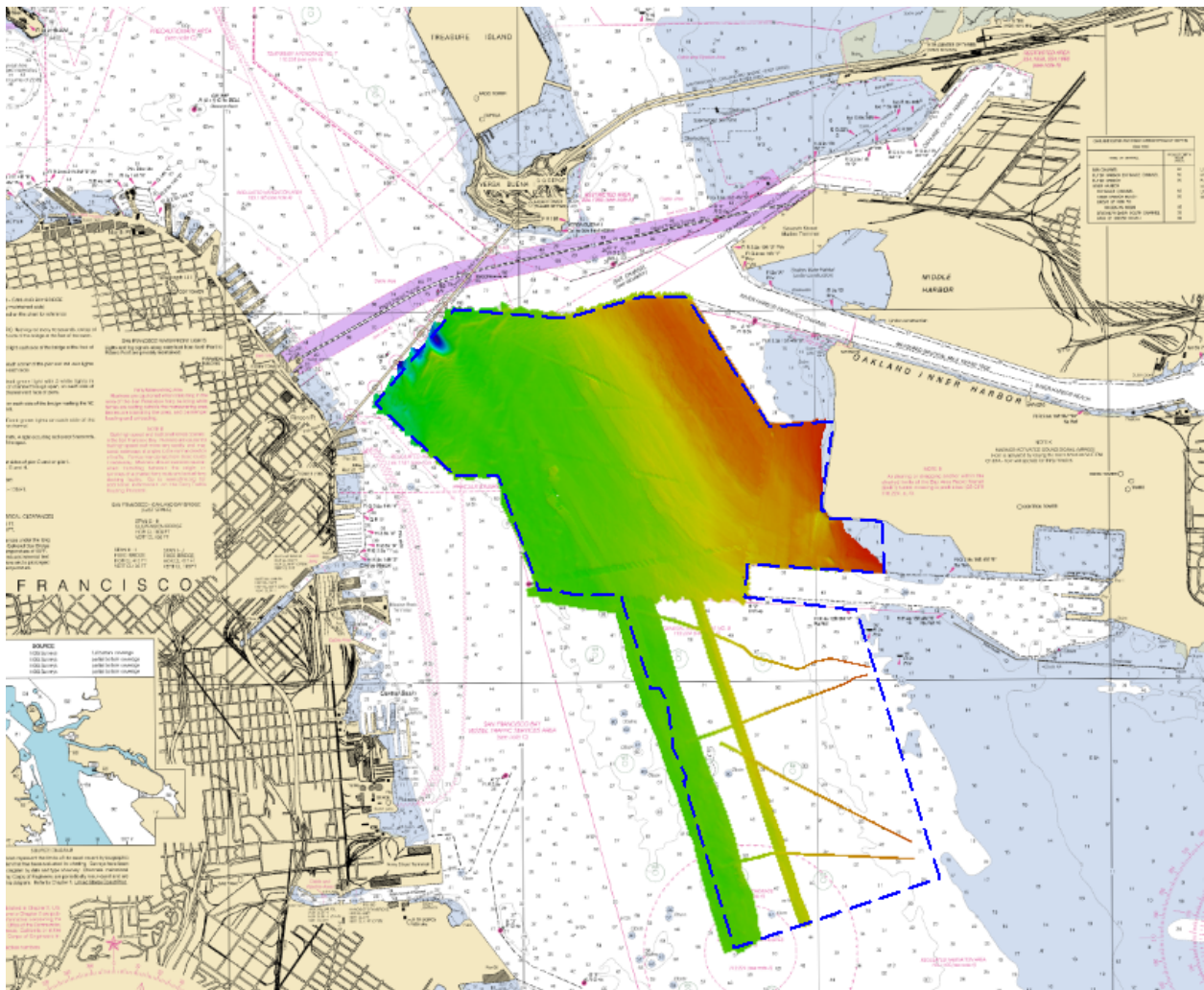
February 2022

NOAA Ship FAIRWEATHER survey

The FAIRWEATHER conducted additional survey work in San Francisco Bay.

See coverage charlet below to see the areas completed this year. Next week they should complete the southern half of the survey area, then end survey operations in the Bay.

All this data will take a few months to process and validate. Once validated, it will be publicly available and will be used to update the nautical charts.



Transitioning to Electronic Navigational Charts (ENC)

Monthly reminder that NOAA continues the process to discontinue production of raster chart products.

Charts on the “to be canceled” list will be announced in the Local Notice to Mariners. The most recent USCG D11 LNM has 20 charts listed as being in “LAST EDITION” status. You can also see the current list on our website at:

<https://www.charts.noaa.gov/MCD/DoleLastEdByChart.shtml>

NOAA’s Custom Chart Tool can be used to convert ENC data to a PDF that looks similar to a raster chart. A few Print on Demand vendors are using the Tool to continue to sell paper charts in areas where raster charts have been discontinued.

The Custom Chart Tool is available here: <https://devgis.charttools.noaa.gov/pod/>

National Weather Service

Nothing unusual to report from NWS.

High pressure drives warm and dry conditions leading into the weekend. Some cooling by early next week but with a period of gusty winds. Conditions look to remain dry at least through the middle of February.

Still in a La Nina condition, which should remain through the Spring.

END OF REPORT

Submitted by
Jeffrey Ferguson
California Navigation Manager
NOAA’s Office of Coast Survey
jeffrey.ferguson@noaa.gov